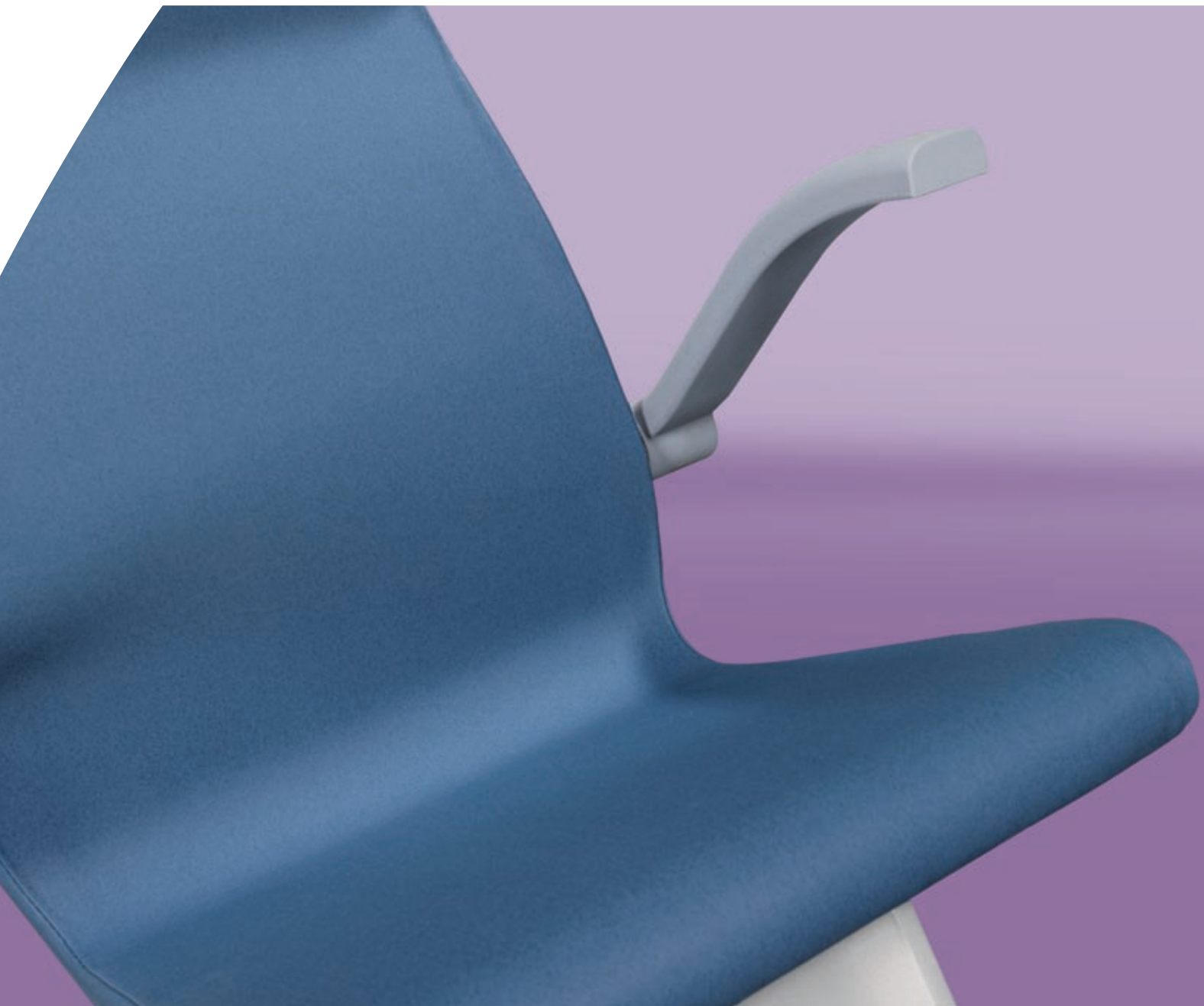


Ophthalmic unit IS-600 II



CONNECTING VISIONS

Ophthalmic unit

IS-600 II



The economical unit that provides many solutions on a small footprint. The contemporary design fits into any professional eye-care practice and emphasises the practice professionalism. Ease of use and economic values were the basis of the development and reflect in the final product.

The clear control panel layout allows easy operation.

Controls are available for:

- Chair elevation, descend and automatic descend to 0 position.
- Reading light
- Dimming of room light
- Projector
- 2 Auxiliary instruments
- Dimming of Slit Lamp / Ophthalmometer



VT-671 slim design phoropter arm with handle for easy manoeuvring.



The dimmable uplighter illuminates the room indirectly

- Both right and left units are available to fit your needs.
- Selection out of 2 different slim designed phoropter arms
- Two different finishes are available: white and light blue.
- Uplighter illuminates the room indirectly
- Easy to operate control panel

IS-600 II optional accessory overview



OC-6 patient chair

VT-670 phoropter arm
VT-670 phoropter arm enables mounting of most available phoropter heads. The mechanical lock ensures fixed positioning of the phoropter in front of the patient.



Foot rest
The foot rest can be mounted underneath OC-6 patient chair, providing easy access of the chair and support during examinations.

Trial lens drawer*
The trial lens drawer provides storage space for trial lens sets. The design of the trial lens drawer enhances the professional looks of IS-600II.



IS-600II basic unit with blue OC-6



Drawer Unit
The drawer unit fits seamlessly to the basic unit and provides storage space for trial lenses, hand held instruments, documents etc. The middle drawer front can be exchanged to allow mounting of the CV-5000 phoropter Power Supply.



Phoropter control unit support**
The phoropter control unit support provides safe storage space for phoropter control units.

* The trial lens drawer is exclusively available for right hand version of IS-600II.

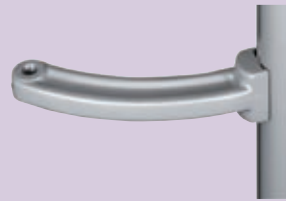
** Phoropter control unit support can exclusively be mounted on the drawer unit.

VT-671 phoropter arm
VT-671 phoropter arm is provided with a handle for easy manoeuvring of the phoropter. A spring-loaded counterbalance ensures positioning of the phoropter.



LED reading lamp
The adjustable LED reading lamp provides clear illumination of reading tests

To match IS-600II configuration with your examination room and professional needs, a wide range of optional accessories has been created. All accessories fit seamlessly into the contemporary design of IS-600II and enhance the practical use of IS-600II ophthalmic unit.



Projector support
The dedicated projector support allows mounting of Topcon chart projectors



Cable management
The cable management system keeps the IS-600II design smooth and contemporary. All cables of instruments installed on the table top can invisibly be guided through the system.



Spacer
Spacer to increase table top height.

Phoropter control unit stand
A dedicated phoropter control unit stand provides easy storage access to the phoropter control unit. The rotatable table top allows the operator to easily reach the patient for any treatment.



Desk
The desk provides space for PC, documents, additional instruments, medication etc.



Where functionality and contemporary design meet



OC-6 patient chair

The OC-6 patient chair is designed to provide a comfortable, active seat for patients during examinations. The standard arm rests are collapsible and the chairs can rotate by 118.5°. An optional foot rest is available to enhance patient's comfort.

The up-down stroke of the chair has increased in order to allow access and usage for a wide range of patients.

Available colours

IS-600II comes in 2 different colours which both match perfectly with instrument colours. Metal parts of IS-600II ophthalmic unit are painted in aluminium colour, emphasising the modern and smooth design of the unit.



White unit with gray patient chair



Light Blue unit with blue patient chair

Chair: Grey (RAL 7037)

Chair: Blue (RAL 504)

Unit: White

Unit: Light Blue

Technical specifications

Ophthalmic unit: IS-600II

Table top	Suitable for 2 instruments
Maximum load on table top	25 kg + 25 kg (per position)
Power on table top	0 - 12V / 5A or 15V / 5A
Power of near vision lamp	3 W Led
Power digital camera DC-series	12V DC / 1A
Power of uplighter	0 – 240 V / Max. 100 W
Safety	Safety stopper underneath the table top
Minimum installation dimensions	1400 x 1520 mm.
Internal dimensions trial lens drawer	460 x 350 x 70 mm.
Height table top from floor	860 mm.
Net weight of IS-600II unit	123 kg.
Power consumption	220 – 240 V AC / 50 – 60 Hz.
Capacity / Consumption	Max. 1100 VA

Ophthalmic chair: OC-6

Arm rests	Foldable
Seat rotation	118.5 °
Stroke (measured at seat plane)	Min. 460 / Max. 650
Max. load capacity	175 kg.
Net weight of OC-6	30 kg.
Power Consumption	220 – 240 V AC / 50 – 60 Hz.
Capacity / Consumption	Max. 700 VA

Phoropter arms

VT-670

VT-671

Load capacity range VT-670 & VT-671	4.5 to 10 kg (adjustable)	
Stroke of phoropter arm	+ 43 ° / - 15 °	
Maximum horizontal rotation of phoropter arm	Free	
Positioning lock	VT-670: Mechanical	VT-671: Counterbalanced
Net weight of phoropter arm	VT-670: 6.6 kg.	VT-671: 6.6 kg.

Optional parts

Dimensions

Net weight

Phoropter control unit support	355 x 200 x 250 mm	1.3 kg
Phoropter control unit stand	400 x 735 x 450 mm	18 kg
Trial lens drawer	840 x 290 x 440 mm	22 kg
Drawer unit	600 x 650 x 440 mm	40 kg
Desk	1200 x 750 x 600 mm	30 kg
Height increase table top by spacer	70 mm	-



IMPORTANT

Subject to change in design and/or specifications without advanced notice.

In order to obtain the best results with this instrument, please be sure to review all user instructions prior to operation.

Topcon Europe Medical B.V.

Essebaan 11; 2908 LJ Capelle a/d IJssel; P.O. Box 145;
2900 AC Capelle a/d IJssel; The Netherlands
Phone: (+31) 10 4585077; Fax: (+31) 10 4585045
E-mail: medical@topcon.nl; www.topcon.eu

Topcon Deutschland GmbH

Giesslerallee 31; D-47877 Willich, Germany
Phone: (+49) 2154 885 0; Fax: (+49) 2154 885 177
E-mail: info@topcon.de; www.topcon.de

Topcon Scandinavia A.B.

Neogatan 2; P.O. Box 25; 43151 Mölndal, Sweden
Phone: (+46) 31 7109200; Fax: (+46) 31 7109249
E-mail: medical@topcon.se; www.topcon.se

Topcon Danmark

Praestemarksvej 25; 4000 Roskilde, Danmark
Phone: (+45) 46 327500; Fax: (+45) 46 327555
E-mail: info@topcondanmark.dk
www.topcondanmark.dk

Topcon España S.A.

HEAD OFFICE; Frederic Mompou, 5; 08960 Sant Just Desvern; Barcelona, Spain
Phone: (+34) 93 4734057; Fax: (+34) 93 4191532
E-mail: medica@topcon.es; www.topcon.es

Topcon S.A.R.L.

HEAD OFFICE; 89, rue de Paris; 92585 Clichy, France
Phone: (+33) 1 41069494; Fax: (+33) 1 47390251
E-mail: topcon@topcon.fr; www.topcon.fr

Topcon Italy

Viale dell' Industria 60; 20037 PADERNO DUGNANO;
(MI) ITALY
Phone: (+39) 02 9186671; Fax: (+39) 02 91081091
E-mail: topconitaly@tiscali.it; www.topcon.it

Topcon (Great Britain) Ltd.

Topcon House; Kennet Side; Bone Lane; Newbury
Berkshire RG14 5PX; United Kingdom
Phone: (+44) 1635 551120; Fax: (+44) 1635 551170
E-mail: info@topcon.co.uk; www.topcon.co.uk

Topcon Ireland

Unit 276, Blanchardstown; Corporate Park 2
Ballycoolin; Dublin 15
Phone: (+353) 1 897 5900; Fax: (+353) 1 829 3915
Email: medical@topcon.ie; www.topcon.ie

